

# Colouredglass

The splashback specialist since 2004



Geoffrey Street Bury BL9 6FT







It is now possible to create a wonderful feeling of depth, space and light in your home using large spans of coloured glass. The technique we use is backpainting where we apply a specially formulated paint to the back of the glass and you see the colour through the glass.

the beauty of glass is **not always clear**

- Modern and stylish look
- Highly stain resistant
- Very clean and hygienic
- Makes any room look spacious
- modern Light reflective surface
- Can be shaped to fit any wall
- Heat and impact resistant

[www.colouredglass.co.uk](http://www.colouredglass.co.uk)





add a touch of 'glass' to your kitchen...

Modern kitchen design incorporates high gloss finishes on both work surfaces and in kitchen cupboards and now this clean bright look can be added to walls with our back-painted glass. Our glass offers a modern, stylish and stunning alternative to tiles, stainless steel and granite with an easy to clean surface.



[www.colouredglass.co.uk](http://www.colouredglass.co.uk)





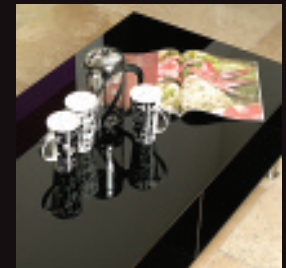






...or your bathroom, living areas...

Our glass products need not be limited to your kitchen. All areas of the home can benefit from modern, bright and hygienic glass. Whether it be bathrooms or other wet areas or being used as a decorative design feature for modern living or work spaces glass offers a stunning, bright and luxurious solution.



[www.colouredglass.co.uk](http://www.colouredglass.co.uk)



# 24 standard colours

Although a myriad of colours are available with our unique paint system we offer a standard range of 24 colours which will suit most applications

Signal White | 9003



White | 9010



Light Ivory | 1015



Light Grey | 7035



Grey Beige | 1019



Azure Blue | 5009



Signal Blue | 5005



Pastel Violet | 4009



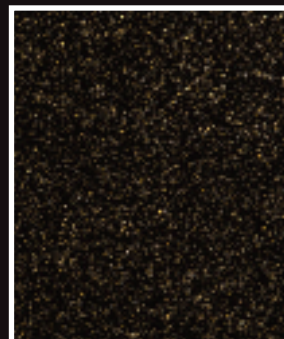
Red Lilac | 4001



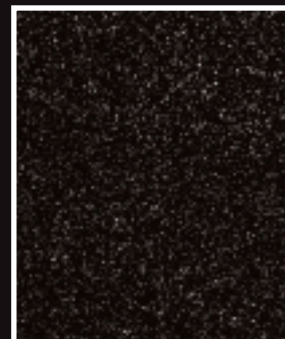
Heather Lilac | 4003

# sparkle effect finishes

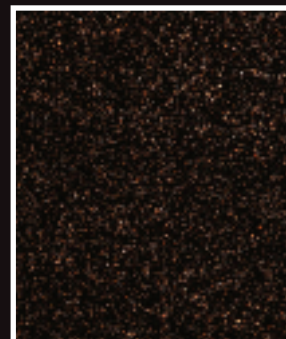
Our sparkle effects certainly create a wow factor and gives an extra dimension to our paint Colour system. The sparkle effect is recommended to be used in Black and other dark colours, available in Silver, Gold or Rainbow.



Gold Quartz



Silver Quartz



Bronze Quartz



Olive | 1020



Pastel Green | 6019



Pastel Turquoise | 6034



Yellow Green | 6018



Pastel Blue | 5024



Silver Grey | 7001



Pigeon Blue | 5014



Traffic Red | 3020



Bright Red Orange | 2008



Zinc Yellow | 1018



Copper



Gold



Silver



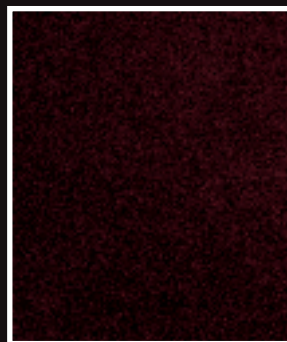
Black

## flash effect finishes

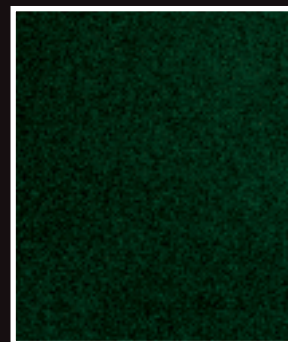
Our flash effect gives a shimmer to the surface similar to a pearlescent effect. These effects are available in a range of colours, Red, Blue, Green and Vibrant Gold and are ideal when used with a black background.



Blue Flash



Red Flash



Green Flash

Using state of the art colour matching technology we can colour match most of the popular colour brands, we have over 30,000 pre matched colours in our extensive colour library, please contact us if you can not find the colour you are looking for.

## custom colour service

With our custom colour service, it is possible to choose from over 1000 pantone colours and 215 Ral colours.





Climbing Vine

## digitally printed designs

Using state of the art digital printing technology, you can now have your own unique image printed directly to glass. View our range of standard images through the 15 categories.



[www.colouredglass.co.uk](http://www.colouredglass.co.uk)





## technical information

Colouredglass is a specialist paint system which has been developed for the colour coating of Glass and Acrylic, it is a 2 part acrylic paint system which once applied to the substrate it mechanically bonds and adheres, this is why we can offer a 10 year warranty with our colour coating.

### Glass Type

We recommend that 6mm glass be used in splashback applications and this should be toughened when being placed behind cookers or in close proximity to high heat. It is also recommended that all applications below a 1200mm threshold should be toughened.

Although we colour match to a very close commercial match to almost any paint colour. this can vary when being viewed through the glass with varying shades of green hue due to high iron content in standard glass, this can be alleviated with the use of Low Iron alternatives such as Pilkington Opti White,

### Fixing

When fixing, we recommend the use of a Low Modular Neutral cure silicone.

- > coloured glass splashbacks
- > glass table tops
- > glass worktops
- > glass wall panelling
- > glass balustrades
- > printed glass splashbacks
- > mirrors in a range of colours
- > bespoke shower enclosures and screens
- > toughened mirrors in a range of colours
- > glass vanity tops

*and much, much more...*

